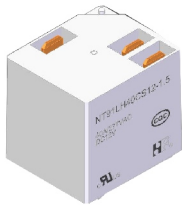
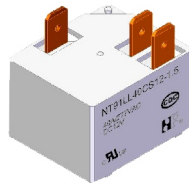


NT91L



32.4 × 27.5 × 28.5



32.4 × 27.5 × 20


 us E160644
 
 13002104039

Features

- Single and double coils magnet latching relay available.
- Switching capacity up to 40A.
- Energy saving and enviromental friendly product.

Ordering Information

NT91L **30** **C** **S** **12** - **1.5** **D** **L**
 1 2 3 4 5 6 7 8

1 Part number: NT91L

2 Load: 30A,40A/277VAC ,28VDC (Resistive load)
 3000W 240VAC (Incandescent Lamp)
 5A/280VAC (Electronic ballast)
 2HP 250VAC (Motor load)

3 Contact arrangement: A:1A; B:1B; C:1C

4 Enclosure: S: Washtight ; E: Flux proof

5 Coil rated voltage(V): 5,12,24,48

6 Coil power: 0.9:0.9W

7 Coil : NIL:Single coil; D: Double coils

8 High: H:Standard; L:Low profile type

Contact Data

Contact Arrangement	1A(SPSTNO) 1B(SPSTNC) 1C(SPDT(B-M))	
Contact Material	AgSnO ₂	
Contact Rating(Resistive)	30A,40A/277VAC Incandescent Lamp :3000W 240VAC Electronic Ballast:5A/280VAC Motor Load:2HP 250VAC	
Max. Switching Power	11000VA	
Max. Switching Voltage	440VAC	Max. Switching Current:40A
Contact Resistance	≤ 20mΩ	Item 4.12 of IEC 61810-7
Operation Life	Electrical	5 × 10 ⁴ Item 4.30 of IEC 61810-7
	Mechanical	1 × 10 ⁶ Item 4.31 of IEC 61810-7

Coil Parameter

1 Coil								
Dash numbers	Rated voltage VDC	Coil resistance Ω ±10%	Set/Reset voltage VDC (80%of rated voltage)	Operating voltage range VDC	Plus duration ms	Coil power W	Set time ms	Reset time ms
005-900	5	28	4	5~6	≥50	0.9	≤15	≤15
012-900	12	160	9.6	12~14.4				
024-900	24	640	19.2	24~28.8				
048-900	48	2560	38.4	48~57.6				

2 Coils								
Dash numbers	Rated voltage VDC	Coil resistance $\Omega \pm 10\%$	Set/Reset voltage VDC (<80% of rated voltage)	Operating voltage range VDC	Plus duration ms	Coil power W	Set time ms	Reset time ms
005-1800	5	2×14	4.0	5~6				
012-1800	12	2×80	9.6	12~14.4				
024-1800	24	2×320	19.2	24~28.8	≥50	2×1.8	≤15	≤15
048-1800	48	2×1280	38.4	48~57.6				

CAUTION: 1. When latching relays are installed in equipment, the latch and reset coil should not be powered simultaneously. Coil should not be pulsed with less than the nominal coil voltage and pulse width should be a minimum of three times the specified operate time of the relay. If these conditions are not followed, it is possible for the relay to be in the magnetically neutral position .
 2. Switching voltage is for test purpose only and are no to be used as design criteria.

Safety Approvals

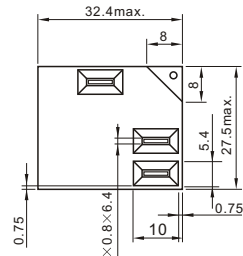
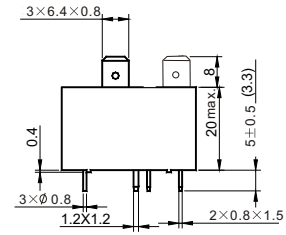
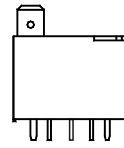
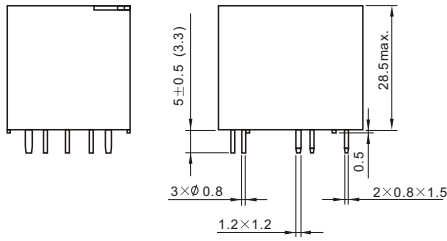
Safety approval	UL&CUR	CQC
Load	30A,40A/277VAC	30A,40A/277VAC

Characteristics

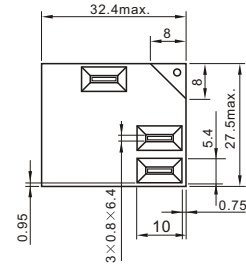
Insulation Resistance	1000M Ω min (at 500VDC)	Item 4.11 of IEC 61810-7
Dielectric Strength Between Contacts	50Hz 1500V 1min	Item 4.9 of IEC 61810-7
Between Contact and Coil	50Hz 2500V 1min	Item 4.9 of IEC 61810-7
Shock Resistance	196m/s ² 11ms	Item 4.26 of IEC 61810-7
Vibration Resistance	10Hz~55Hz Double amplitude 1.5mm	Item 4.28 of IEC 61810-7
Terminals Strength	10N	Item 4.24 of IEC 61810-7
Ambient Temperature	-40°C~85°C	
Relative Humidity	5% to 85%	Item 4.16 of IEC 61810-7
Mass	31g (Low profile type) 35g	Item 4.7 of IEC 61810-7

Dimensions

mm

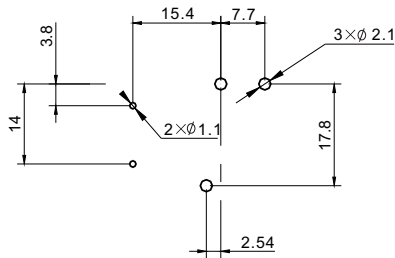


NT91L

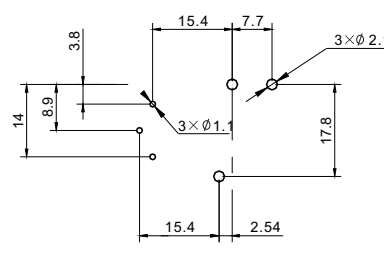


NT91LL

Dimensions

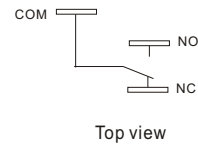
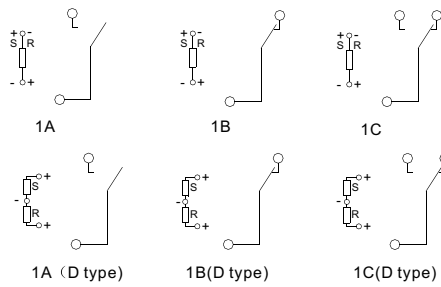


Single coil



Double coils

Mounting (Bottom view)



Wiring diagram(Bottom view)

- CAUTION: 1. Relays shall have plus(+) signs or "+" and "-" placed on the circuit diagram as shown.
 2. In case of no tolerance shown in outline dimension: outline dimension ≤ 1 mm, tolerance should be ± 0.2 mm; outline dimension > 1 mm and ≤ 5 mm, tolerance should be ± 0.3 mm; outline dimension > 5 mm, tolerance should be ± 0.4 mm.