
特点 Features:

- 高灵敏度:线圈功率150mW
High sensitive:150mW coil power
- 小型尺寸
Small size:20.2x10x11.5mm
- 两组转换触点形式
2 transfer contact configuration.

| 触点参数 CONTACT DATA | | |
|-------------------|-----------------------------|-------------------------|
| 型号 | Model | YT106 |
| 触点形式 | Contact Arrangement | 2C |
| 接触电阻 | Contact Resistance | 100mΩ Max. |
| 触点材料 | Contact Material | 银合金 Silver Alloy |
| 额定负载(阻性) | Contact Rating (Res.Load) | 1A 125VAC ; 2A 30VDC |
| 最大切换电流 | Max. Switching Current | 2A |
| 最大切换电压 | Max. Switching Voltage | 125VAC/30VDC |
| 最大切换功率 | Max. Switching Power | 125VA/60W |
| 机械寿命 | Mechanical endurance | 1x10 ⁷ 次 OPS |
| 电气寿命 | Electrical endurance | 1x10 ⁵ 次 OPS |

| 性能参数 CHARACTERISTICS | | |
|----------------------|--------------------------------|--|
| 吸合时间(额定电压下) | Operate Time (at nomi.volt.) | 6ms Max. |
| 释放时间(不带二极管) | Release Time (without diode) | 4ms Max. |
| 绝缘电阻 | Insulation Resistance | 100MΩ Min.(500VDC) |
| 介质耐压 | Dielectric Strength | 触点与触点间 Between Open Contacts : 750VAC, 50/60Hz 1 min. |
| | | 触点与线圈间 Between Coil & Contacts: 1,000VAC, 50/60Hz 1 min. |
| 抗振性 | Vibration resistance | 误动作 Functional: 10~55Hz 双振幅 1.5mm (DA) |
| | | 耐久 Destructive: 10~55Hz 双振幅 1.5mm (DA) |
| 抗冲击 | Shock resistance | 误动作 Functional: 10G Min. |
| | | 耐久 Destructive: 50G Min. |
| 环境温度 | Ambient Temperature | -40°C~+85°C (不冷凝 No condensation) |
| 重量 | Unit Weight | 约 Approx. 5.0g |

| 线圈参数 COIL DATA (at 23°C) | | | | | | |
|--------------------------------|-----------------------------------|------------------------------------|---|---------------------------------------|---------------------------------------|---------------------------------|
| 额定电压 Rated voltage (VDC) | 额定电流 Rated current ±10%(mA) | 线圈电阻 Coil resistance ±10%(Ω) | 最大连续外加电压 Max allowable voltage VDC (Max.) | 吸合电压 Operate voltage VDC (Max.) | 释放电压 Release voltage VDC (Min.) | 额定功率 Rated coil power (W) |
| 3 | 50.0 | 60 | 7.0 | 额定电压的 of rated voltage 75 % | 额定电压的 of rated voltage 5 % | 约 approx. 0.15 |
| 5 | 30.0 | 167 | 11.5 | | | |
| 6 | 25.0 | 240 | 13.8 | | | |
| 9 | 16.7 | 540 | 20.8 | | | |
| 12 | 12.5 | 960 | 27.7 | | | |
| 24 | 6.3 | 3,840 | 55.2 | | | |

线圈参数 COIL DATA (at 23°C)

| 额定电压 Rated voltage (VDC) | 额定电流 Rated current ±10%(mA) | 线圈电阻 Coil resistance ±10%(Ω) | 最大连续外加电压 Max allowable voltage VDC (Max.) | 吸合电压 Operate voltage VDC (Max.) | 释放电压 Release voltage VDC (Min.) | 额定功率 Rated coil power (W) |
|--------------------------------|-----------------------------------|------------------------------------|---|---------------------------------------|---------------------------------------|---------------------------------|
| 3 | 66.7 | 45 | 6.0 | 额定电压的 of rated voltage 75 % | 额定电压的 of rated voltage 5 % | 约 approx. 0.20 |
| 5 | 40.0 | 125 | 10.0 | | | |
| 6 | 33.3 | 180 | 12.0 | | | |
| 9 | 22.2 | 405 | 18.0 | | | |
| 12 | 16.7 | 720 | 24.0 | | | |
| 24 | 8.3 | 2,880 | 48.0 | | | |
| 3 | 120.0 | 25 | 4.5 | 额定电压的 of rated voltage 75 % | 额定电压的 of rated voltage 5 % | 约 approx. 0.36 |
| 5 | 72.0 | 69 | 8.0 | | | |
| 6 | 60.0 | 100 | 10.0 | | | |
| 9 | 40.0 | 225 | 14.5 | | | |
| 12 | 30.0 | 400 | 18.5 | | | |
| 24 | 15.0 | 1,600 | 35.5 | | | |

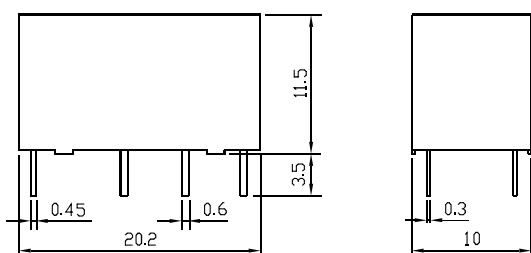
订货标记示例 ORDERING INFORMATION

| | | | | | | |
|-------|----|----|----|--------------------------------|---|--|
| YT106 | -S | -2 | 12 | D | M | |
| | | | | 触点形式 Contact form : | | 无-转换, Nil-Form C |
| | | | | 线圈功耗 Coil power : | | D-0.36 W, L-0.2W (0.15W 可选 optional) |
| | | | | 线圈规格 Coil voltage : | | 03,05,06,09,12,24 (VDC) |
| | | | | 触点组数 Number of poles : | | 2-2组, 2-2 Group |
| | | | | 封装形式 Protective construction : | | S-塑封式 S-Flux proofed |
| | | | | 基本型号 Type designation : | | YT106 |

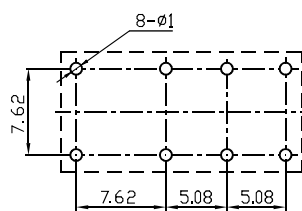
外形尺寸、接线图、安装孔位图 (单位: mm)

OUTLINE DIMENSIONS, WIRING DIAGRAM AND PCB LAYOUT (Unit: mm)

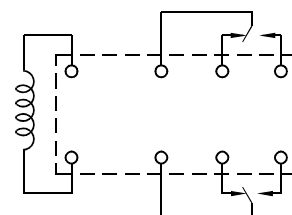
外形尺寸
Outline Dimensions



安装孔位图 (底视图)
PCB Layout (Bottom View)



接线图 (底视图)
Wiring Diagram (Bottom View)

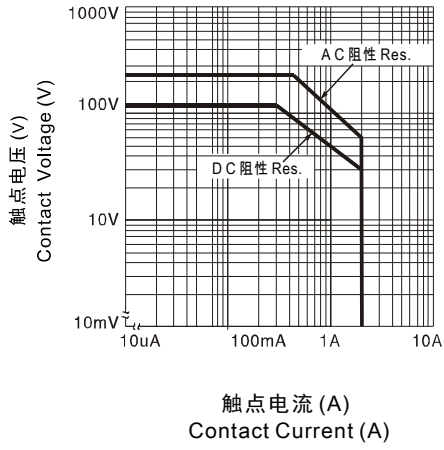


注 Remark :

- 未标注尺寸公差 Unmarked dimensional tolerance
≤1mm: ±0.2mm ; (1~5)mm: ±0.3mm ; ≥5mm: ±0.4mm.
- 安装孔尺寸公差: ±0.1mm.
The tolerance of PCB layout is always: ±0.1mm.
- 引出脚尺寸为预焊前尺寸.
Extended terminal dimension is dimension before soldering.

性能曲线图 CHARACTERISTIC CURVES

最大切换功率
Max. Switching Power



寿命曲线
Endurance Curve

